



Lower Level Work Area Below Maintenance Bay



Interior Bus Parking



Interior Fueling Island

Project Summary

Construction Information

- Total Construction Cost: \$19,500,000

Building Size/Capacity

- Total Site Area: 20 acres
- Total Building Area: 176,214 square feet
 - Maintenance Area: 24,583 square feet
 - Administration/Operations Area: 13,068 square feet
 - Indoor Bus Storage Area: 126,541 square feet
 - Mezzanine Area: 8,906 square feet
- Current Construction Accommodates 76-Bus Fleet
- Master Planned To Expand to 130-Bus Fleet

Facility Design Features

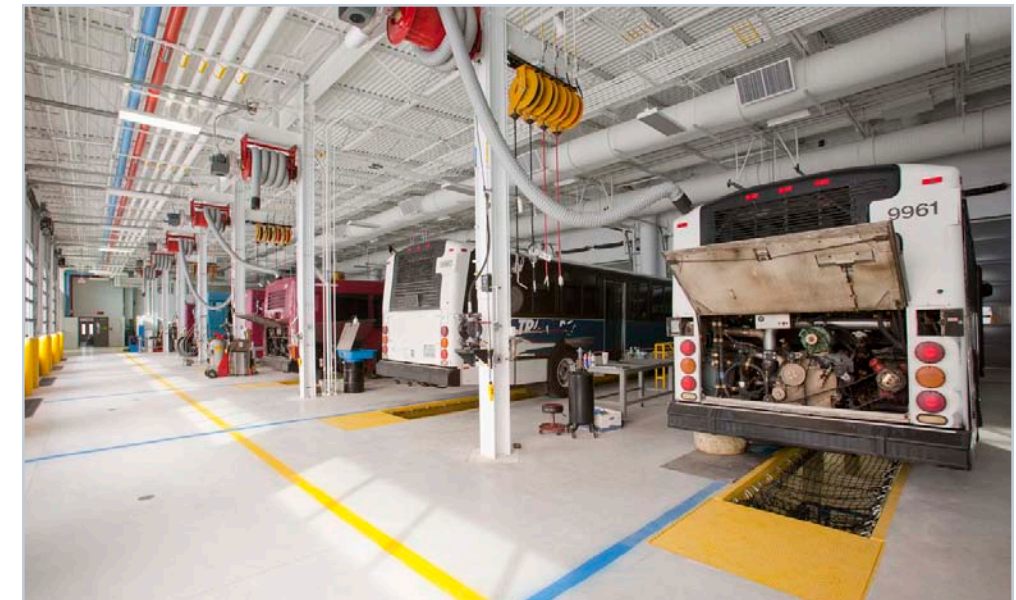
- The facility configuration allows all buses to circulate indoors to maintenance functions and through the service cycle which includes fueling, fare recovery, interior cleaning, fluid top-off, and exterior washing so that buses only leave the facility to go into service.
- Shop Support Spaces such as Parts Storage, Tool Crib, Battery Room, Shipping and Receiving and Lubrication/Compressor Room are all designed with the latest in storage equipment and technology to include:
 - Vehicle Fluid/Lubrication Delivery System to provide the necessary fluids to each Repair Bay, quickly and safely.
 - Code compliant storage for batteries and charging.
 - Heavy duty shelving and drawer storage units to safely and securely store small, medium and large parts
 - Integrated Parts Lift to move larger, heavier parts from the main floor to Storage Mezzanine
- Vehicle Service functions help maintain the physical cleanliness of each bus and provide fuel and other top off fluids. Innovative equipment design facilitates each function for maximum efficiency to include:
 - Automated Drive-through Bus Wash System with Water Reclaim and Reverse Osmosis System
 - High Efficiency Vacuum System with Hose Reels and Detail Station
 - Fuel Tramway System to accommodate varying vehicle lengths and Fuel Port locations
 - Fare Collection with money collection vaults to allow service workers to quickly and safely deposit fares to the Fare Processing area daily.

Brochure Provided By



www.maintenancedesigngroup.com

Denver | Baltimore
Los Angeles | Houston
303.302.0266



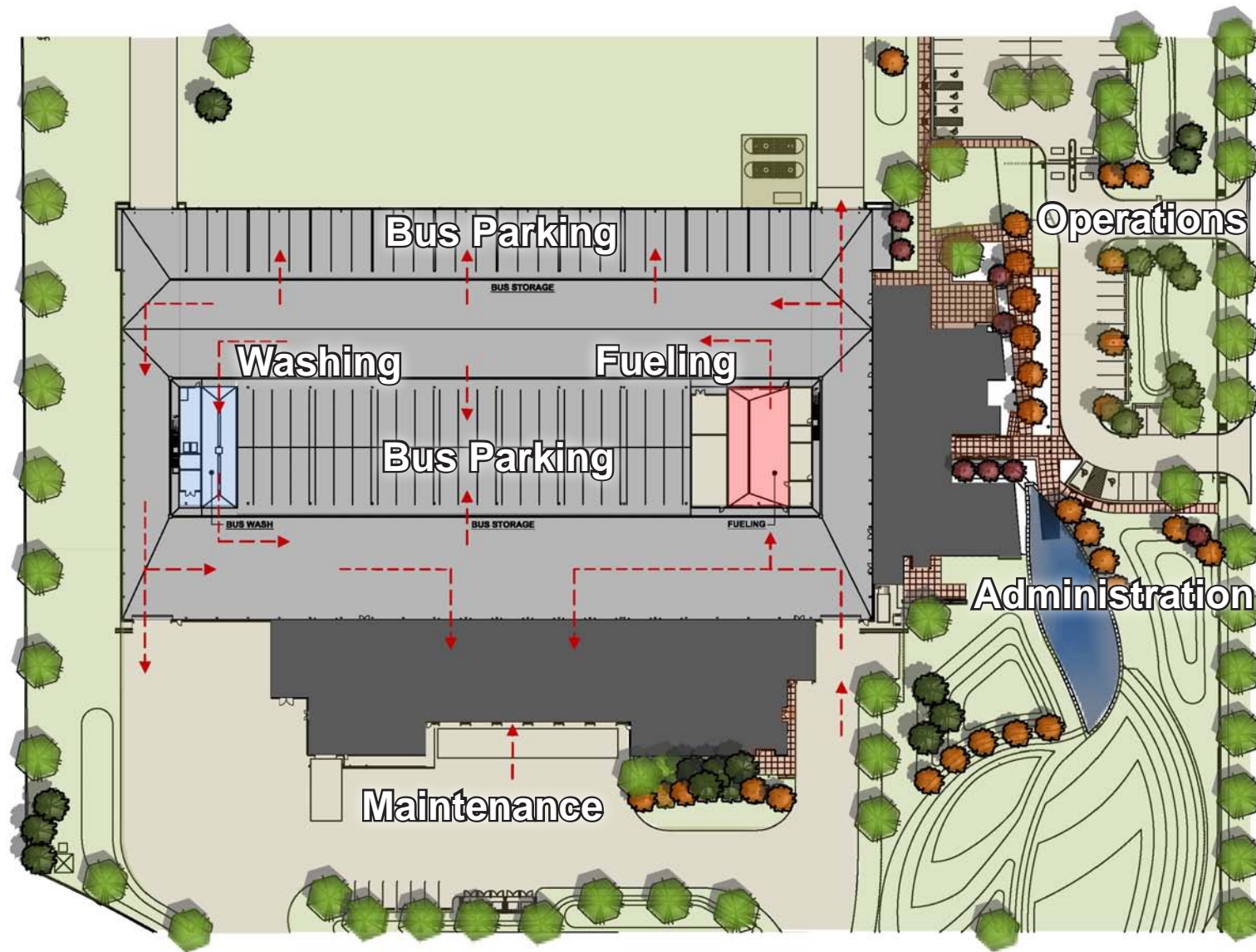
**EMIL "LUCKY" REZNIK
BUS ADMINISTRATION, OPERATIONS,
AND MAINTENANCE FACILITY**

SOUTH BEND, INDIANA

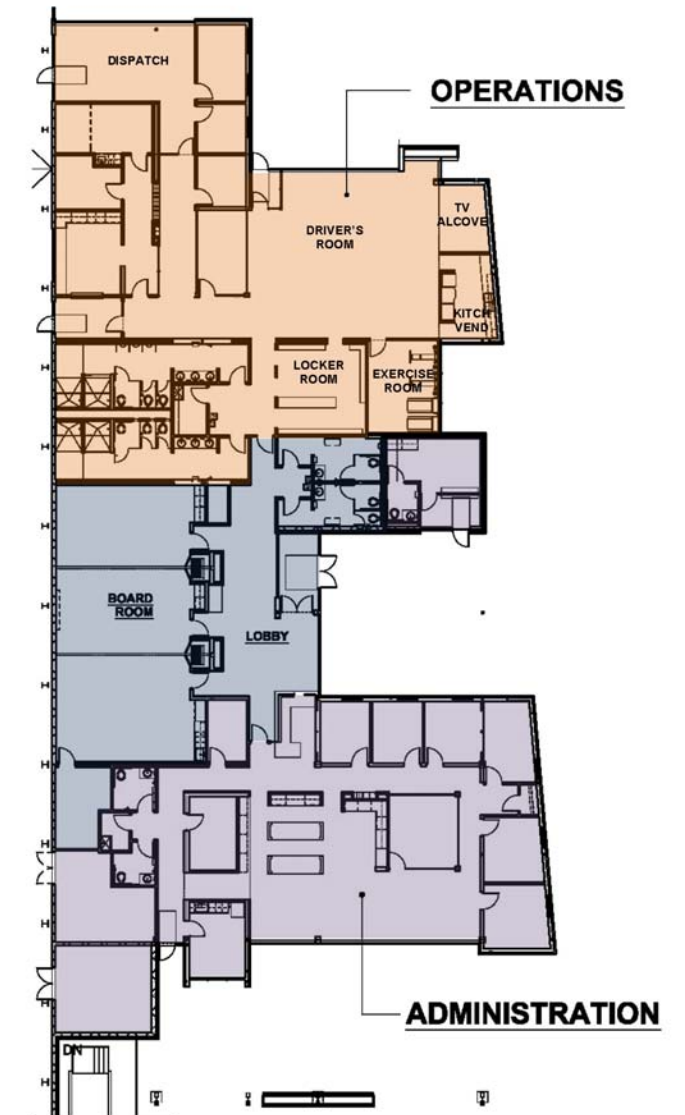


Design Team:
FORUM Architects
RNL
Maintenance Design Group, LLC

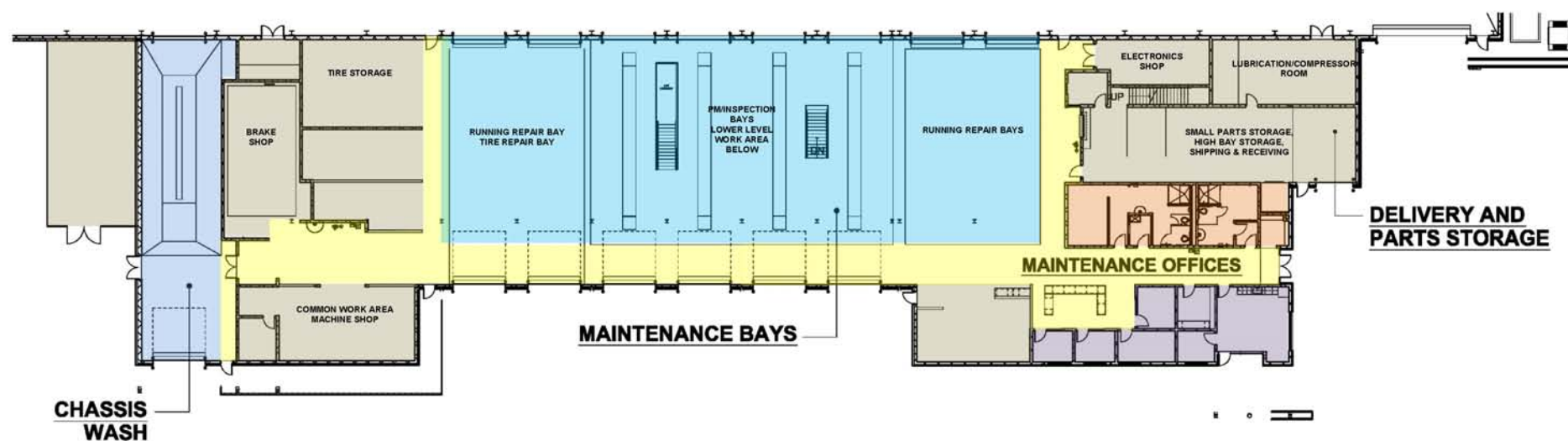
Site Plan



Administration & Operations



Maintenance



Functional Design Features

State of the Art Bus Maintenance Repair Facility:

- 1 Flat Running Repair Bay
- 2 Running Repair Bays with Lifts
- 1 Tire Repair Bay with Lift
- 2 Running Repair Bays with Lower Level Work Area (LLWA) access
- 2 PM/Inspection Repair Bays with LLWA access
- 1 Chassis Wash Bay for undercarriage cleaning that includes a high pressure wash and a parallelogram-type lift for cleaning the bus undercarriage

Other Shop Areas Include:

- Steam Clean/Component Clean Area
- Common Work Area/Machine Shop
- Brake Shop with "Transfermatic" brake lathe and crane-assisted wheel set loading
- Tire Shop
- Component Rebuild Room
- Lower Level Work Area for fluid changes and inspections
- LLWA also includes Mobile Work Platform Technology